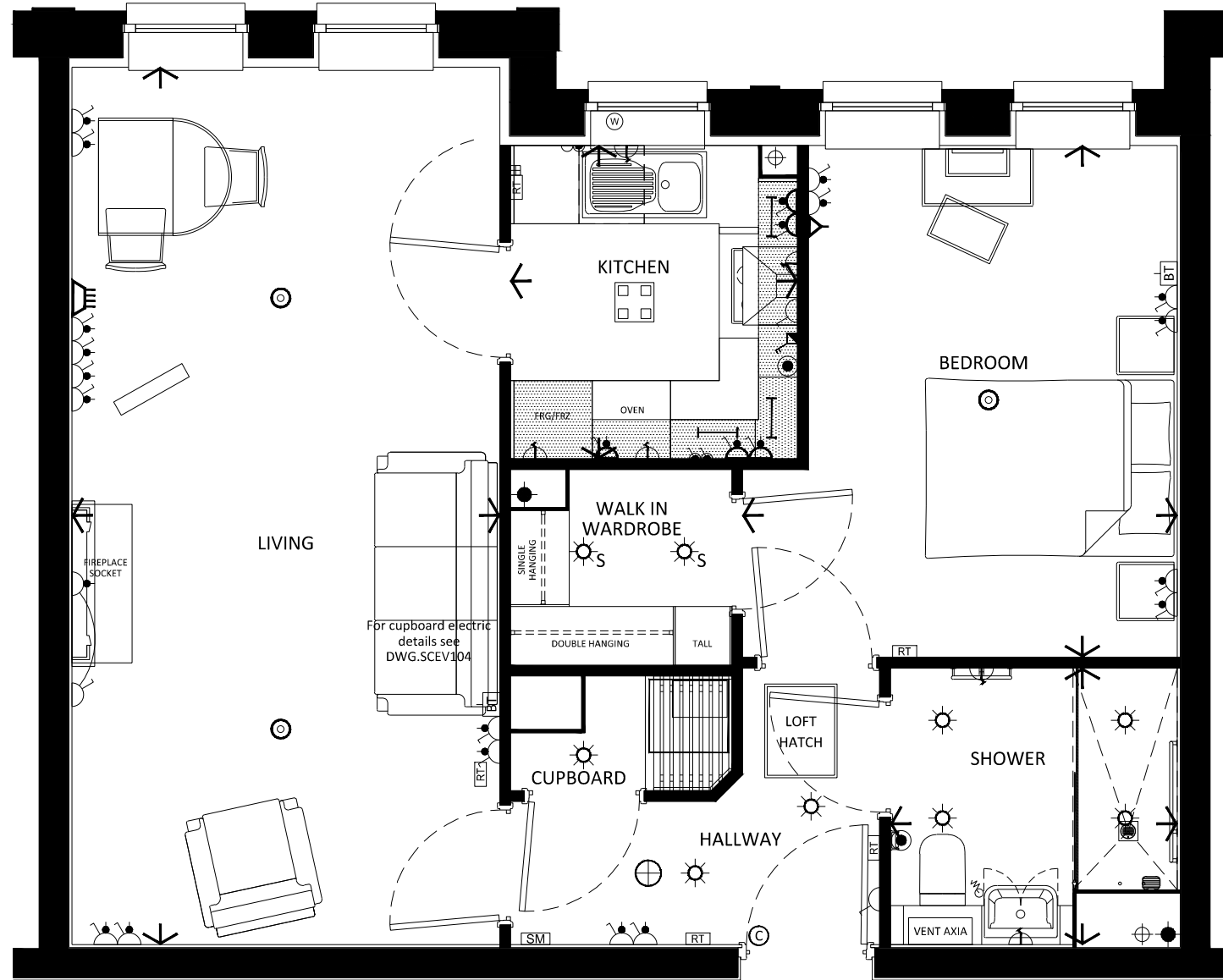


FLAT AREA :-
579.68 ft²
53.85 m²
 measured to finished
 plasterboard faces
 disregarding inner walls



Revisions:

Rev:	Updated to comply with latest spec	Date:	By:
A	Updated to comply with latest spec	23/04/15	TC
B	Updated to comply with latest spec	03/06/15	TC

LEGEND	
	LIGHT SWITCHES - ONE WAY ONE WAY WITH NEON INDICATOR ONE WAY ILLUMINATED TWO WAY ILLUMINATED
	PELMET LIGHT
	WALL LIGHT
	CEILING LIGHTS - PENDANT BULKHEAD
	CEILING MOUNTED LIGHT FITTING - KITCHEN/BATHROOM/SHOWER
	BATTEN LAMPHOLDER
	LED DOWNLIGHT ("S" DENOTES PIR SENSOR OPERATED)
	BATHROOM STRIP LIGHT WITH SHAVER SOCKET
	SWITCHED SOCKET OUTLETS - SINGLE DOUBLE
	SWITCHED SOCKET OUTLETS - SINGLE DOUBLE HIGH LEVEL - ABOVE WORKTOP
	FRIDGE SOCKET WITH REMOTE NEON SWITCH
	CABLE OUTLET AND JUNCTION BOX
	SWITCHED SPUR WITH CABLE OUTLET AND NEON INDICATOR
	SWITCHED UNSWITCHED SPUR POINT
	COOKER CONTROL COOKER CONTROL WITH SOCKET
	CONSUMER UNIT
	TELEVISION TELEVISION / VHF AERIAL SATELLITE SOCKET
	SOCKET WITH REMOTE SWITCH FOR OPTIONAL FIREPLACE
	BT TELEPHONE OUTLET
	ENTRY PHONE / SPEECH MODULE / SECURITY PANEL
	PROGRAMMABLE ROOM THERMOSTAT
	ROOM THERMOSTAT (1500mm FROM FFL ABOVE LIGHT SWITCHES)
	DOOR BELL / PUSH BUTTON
	SECURITY MAGNETIC CONTACT
	OPTICAL SMOKE DETECTOR / SOUNDER
	EMERGENCY PULL CORD
	VENTILATION BOOST BUTTON
	TRAY FRIDGE FREEZER SPACE BELOW WORKTOP
	HEATED TOWEL RAIL
	ELECTRIC SHOWER / SHOWER MIXER (WHERE SPECIFIED)
	ELECTRIC WINDOW OPENER
	4xLED SPOTLIGHT FITTING FOR KITCHEN

SALES
Apartment No. 30



© McCarthy & Stone Retirement Lifestyles Limited

Type: _____
 Aspect: _____
 Price: _____
 Other Features: _____

Living	22'-1" max x 10'-9" max	6725mm max x 3280mm max
Kitchen	7'-10" max x 7'-3" max	2400mm max x 2200mm max
Bedroom	12'-10" max x 10'-11" max	3920mm max x 3332mm max
Shower	7'-3" max x 6'-11" max	2200mm max x 2120mm max

Although every effort has been made to ensure accuracy, exact room dimensions may vary during the course of construction and no responsibility can be accepted for any mis-statement on this leaflet, which is not a contract nor forms any part of any contract. The company also reserves the right to alter specification without notice. All information correct at time of going to print.

Project Title:
 Later Living Development
 Coinscross Road
 STROUD

Scale: 1:50@A3 Date: April 14 Drawn: TC Checked: _____

Drawing No: **01/1805/230** Revision: **B**

Plot Date: 08/6/15